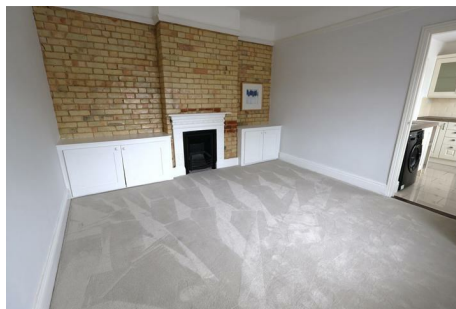




# GREENDOOR PROPERTY



## Flat 3 The Old Bakery 52 High Street , Stotfold, SG5 4LD

A spacious one-bedroom first-floor flat located in the centre of Stotfold. Recently redecorated, the property boasts new carpets throughout, providing a fresh and inviting atmosphere.

The flat features a well-proportioned reception room, perfect for relaxation or entertaining guests. The bedroom is designed to be a tranquil retreat, ensuring a peaceful night's sleep. The bathroom is conveniently located, catering to all your daily needs.

One of the standout features of this property is its proximity to local amenities, making it an ideal choice for those who appreciate convenience. Whether you are looking for shops, cafes, or recreational facilities, everything you need is just a short stroll away.

Additionally, the flat comes with an allocated parking space. This property is available for immediate occupancy, making it a perfect opportunity for anyone looking to move in without delay.

**£995 Per month**

# Flat 3 The Old Bakery 52 High Street , Stotfold, SG5 4LD



## Bedroom

12'10" x 11'5" (3.93 x 3.48)

## Living room

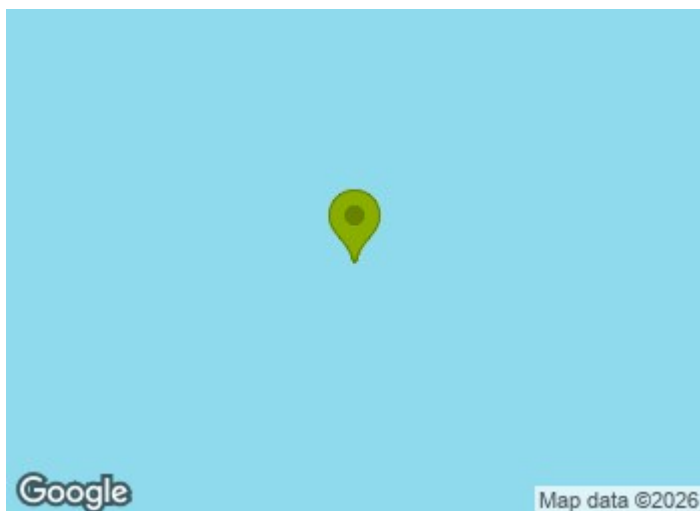
13'0" x 11'11" (3.97 x 3.64)

## Kitchen

9'7" x 6'11" (2.94 x 2.13)

## Bathroom

9'7" x 5'9" (2.94 x 1.77)

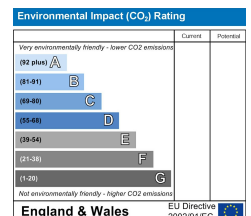
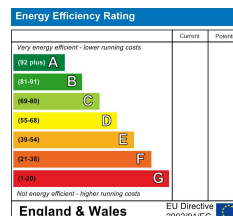


[Directions](#)



# Floor Plan

Every care has been taken with the preparation of these particulars, but complete accuracy cannot be guaranteed. If there is any point, which is of particular importance to you, please obtain professional confirmation. Alternatively, we will be pleased to check the information for you. These Particulars do not constitute a contract or part of a contract. All measurements quoted are approximate. The Fixtures, Fittings & Appliances have not been tested and therefore no guarantee can be given that they are in working order. Photographs are reproduced for general information and it cannot be inferred that any item shown is included in the sale.



  
**Green Door**  
 3 Maiden Street  
 Weston  
 Hitchin Hertfordshire,  
 SG4 7DG  
[info@greendoorpm.co.uk](mailto:info@greendoorpm.co.uk)  
 call 01462 510765  
[www.greendoorpm.co.uk](http://www.greendoorpm.co.uk)

